

Gallery to Visit
Oeno





Sasha Rogers, *Sea*, acrylic on canvas, 42" x 36"



Dale Dunning, *Whisper Maquet*, bronze, 3/7" x 6.25" x 4" x 4"



Marni Grossman, *Unveilling*, limited edition pigment print, 2/40 - 33" x 22"



Etienne Labbe, *Une colline dans la vallee*, chromaogenic print on dibond, 24" x 72"



Daniel Hughes, *Emily Sleeping*, oil on canvas, 16" x 24"

Big City Gallery in Wine Country

Situated in one of Canada's truly unique wine growing regions is a first class gallery experience. When you visit the Oeno Gallery you won't be in a hurry to leave and you will probably find yourself returning time after time. Whether you return to see what fabulous new artists are on the gallery walls or explore a different path in the sculpture garden, it is an experience you will not want to miss.

The Oeno Gallery is one of the most surprising discoveries we have made in Prince Edward County. Nestled next to the Huff Estates Inn and Winery, the Oeno Gallery and its new sculpture garden is the sort of gallery that one would expect to find in California or New Mexico or a major Canadian city – not what we thought we would find in this quiet agricultural island in Lake Ontario.

You will enjoy a visit and a chat with Carlyn Moulton one of the owners. Her vision for the gallery and the artists she carries is both exciting and creative. Her collection of unique and worldwide contemporary artists is vast and extremely collectable.

Oeno represents such outstanding and internationally acclaimed Canadian artists as Alice Teichert, Otto Rogers, Shayne Dark, Neil Clifford, David James, Dale Dunning and Susan Collett. They represent a number of other exceptional artists, many from Eastern Ontario, and others from Quebec and the United States. They take great pleasure from representing artists such as Kim Atlin, Scott Pattinson, Chris Langstroth and Sylvain Louis-Seize, who are at relatively early stages in their careers, but have great potential to become significant voices within the Canadian art scene.

They also occasionally exhibit treasures they find elsewhere. The business has grown from a small owner run business, with part time staff members, to a gallery open 360 days a year, with



DanSusan Collett Exhibition



Dale Dunning, *Font II*, aluminium, 2/7 - 27" x 17" x 9"

five full time and three part-time staff. In 2003, Carlyn Moulton and partner Barbara Basille discovered Prince Edward County for the first time. Carlyn states, "The first weekend we relaxed, on our second visit we found a real estate agent, and on our fourth visit, we decided to make this our home."

"When we opened the gallery in 2004, we were determined to just open a couple of days a week, do it on our own without employees, and enjoy the quiet of the County, but by the end of the second year, we were swamped," says Carlyn. Thousands of people were coming through their house at all hours of the day and night – whether the "Resting" sign was out front or not, and they needed help.

In 2007, Carlyn and Barbara approached Lanny Huff, the owner of Huff Estates Winery and Inn and proposed relocating the gallery next to the Winery. The new art gallery – designed by Moulton and Jeff Douglas of Douglas Design Studio - opened January 1, 2009. Carlyn states, "It just made sense for both of our businesses. People can enjoy staying in the Inn, wander over

to the gallery, spend time on the patio enjoying a gourmet lunch and taste some great wine."

Oeno's clients come from across Ontario and Quebec, but they now have a growing number from the United States, Australia and Europe who find them on the web.

Carlyn states, "About half our sales today are to people who have not been in the gallery, but who are interested in acquiring the work of the artists we represent. We now keep a truck and installers on the road almost full time, taking work to people who haven't yet discovered the County, but who are collecting the art."

The relationship with the Winery has also been very successful and being part of a tourist destination makes it easy for visitors to include in their plans when they visit Prince Edward County. Today there are more than 40 wineries now open in Prince Edward County, and the area has one of the highest numbers of artists per capita of any Canadian region. Many visitors enjoy following the wine trail, the arts trail and the exceptional restaurants that have opened along the way – all celebrating the extraordinary landscape and



Susan Collett, *RCA, Hive*, hand-built ceramic, 42" x 26" x 27"

terroir that make up the County.

Visiting the gallery is an experience not to be missed. The grounds and unique architecture let you know that this is a special destination. This spring, they expanded their outdoor sculpture exhibition area to include four acres of paths, gardens and picnic areas, and over the next few years, they expect the sculpture garden to be a very exciting part of their evolution. The Sculpture Garden is an engaging new attraction within the community, designed as a place of discovery and contemplation, a celebration of the interplay of dynamic works of art and the perennials that surround them. Over twenty artists, including Shayne Dark, Rick Lapointe, Anne O'Callaghan and Floyd Elzinga created pieces for the garden.

"This is really just an extension of the way that our businesses have been collaborating and working together," says Lanny Huff. "We are getting over 20,000 people visiting the Estates every year now, and this will give them another interesting thing to do here."

"I'm most interested in creating the opportunity for people to experience the interplay between the colour and beauty of nature and the artists' response to the different environments created by the ridge, the pond or the wind," says gallery owner, Carlyn Moulton. "Each piece transforms its own area of the garden."

The Scott Wentworth Landscape Group and landscape designer Drew MacCandlish from Wight's Greenhouses have completed the project after collaborating on the development and design. "The garden is a beautiful outdoor space that embraces and celebrates dynamic works of art," says Drew MacCandlish. Large swaths of lavender, poppies, and sunflowers – started in MacCandlish's greenhouses last winter – play with colour and light.

"Gardens such as these become much energized places," says Wentworth. "The materials we are using – limestone, sand, and the plantings – all celebrate the landscape of the County."

Oeno Gallery's goal is to exhibit and source work that is contemporary, artistically compelling and of high quality, with the potential to appreciate over time. Carlyn and the staff of Oeno Gallery spend a great deal of time looking at new work, in artists' studios and on the internet, trying to find pieces that fit their aesthetic vision.

Today they are also growing the secondary market side of their business – offering clients the opportunity to sell quality work that they may have inherited or acquired, but now want to sell. Over



Sasha Rogers, *Invisible Winds*, acrylic on canvas, 60" x 60"



Sylvain Louis-Seize, *Aeternum*, mixed media on board with resin, 48" x 48"



Alice Teichert, *This Way Up*, Acrylic and Crayon Canvas, 60" x 60"



Mark Clark, *Calder & Wine*



Anne O'Callaghan, *Urn*



Kathryn Lipke Vigesaa, *Flight*



Path in Sculpture Garden



Shayne Dark, *Tangle Wood*

the past year, they have sold work by exceptional Canadian artists - members of the Group of Seven and the Painters Eleven for example - and they continue to have work on offer by Michael Snow, Joyce Weiland, William Ronald, Walter Yarwood, and others.

The artists represented by Carlyn Moulton and Oeno Gallery are sometimes challenging, frequently breathtakingly beautiful and thought inspiring.

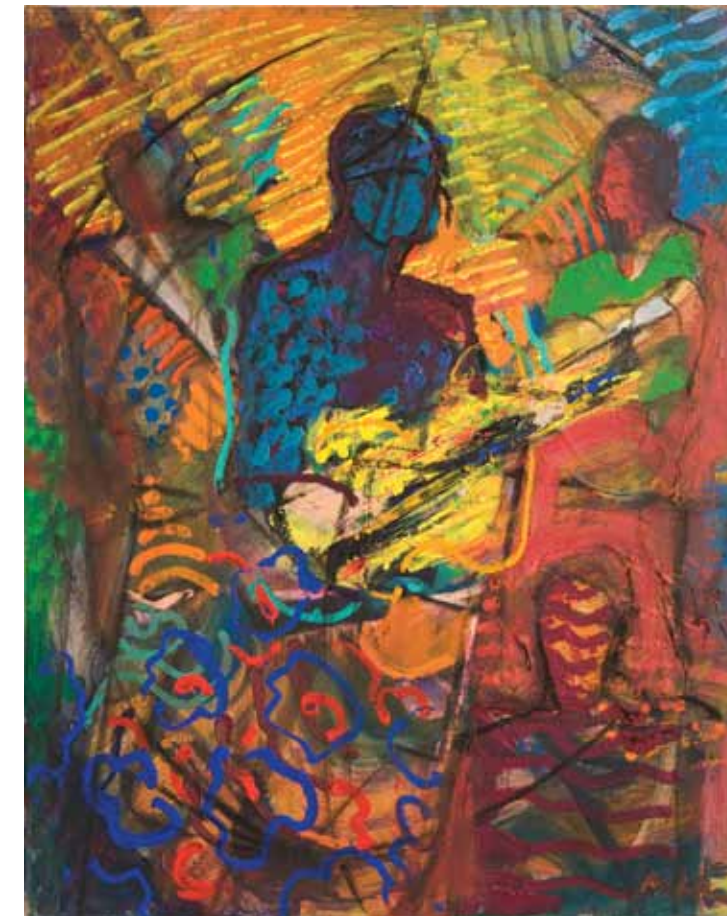
Come for a visit and you just might get seduced by the beauty of Prince Edward County.

Oeno Gallery

2274 County Road #1
 Bloomfield, Ontario K0K1G0
 613.393.2216
www.oenogallery.com



Eileen Gordon, *Stopped Leaf Bottle*, glass, 20" x 7" x 3"



top left, Scott Pattinson, *Silence #22*, acrylic on canvas, 72" x 60"

bottom left, Graham Metson, *Bayon*, acrylic on canvas, 30" x 24"

top right, Andrew Lui, *Woven Journey II*, acrylic on rice paper, 84" x 66"

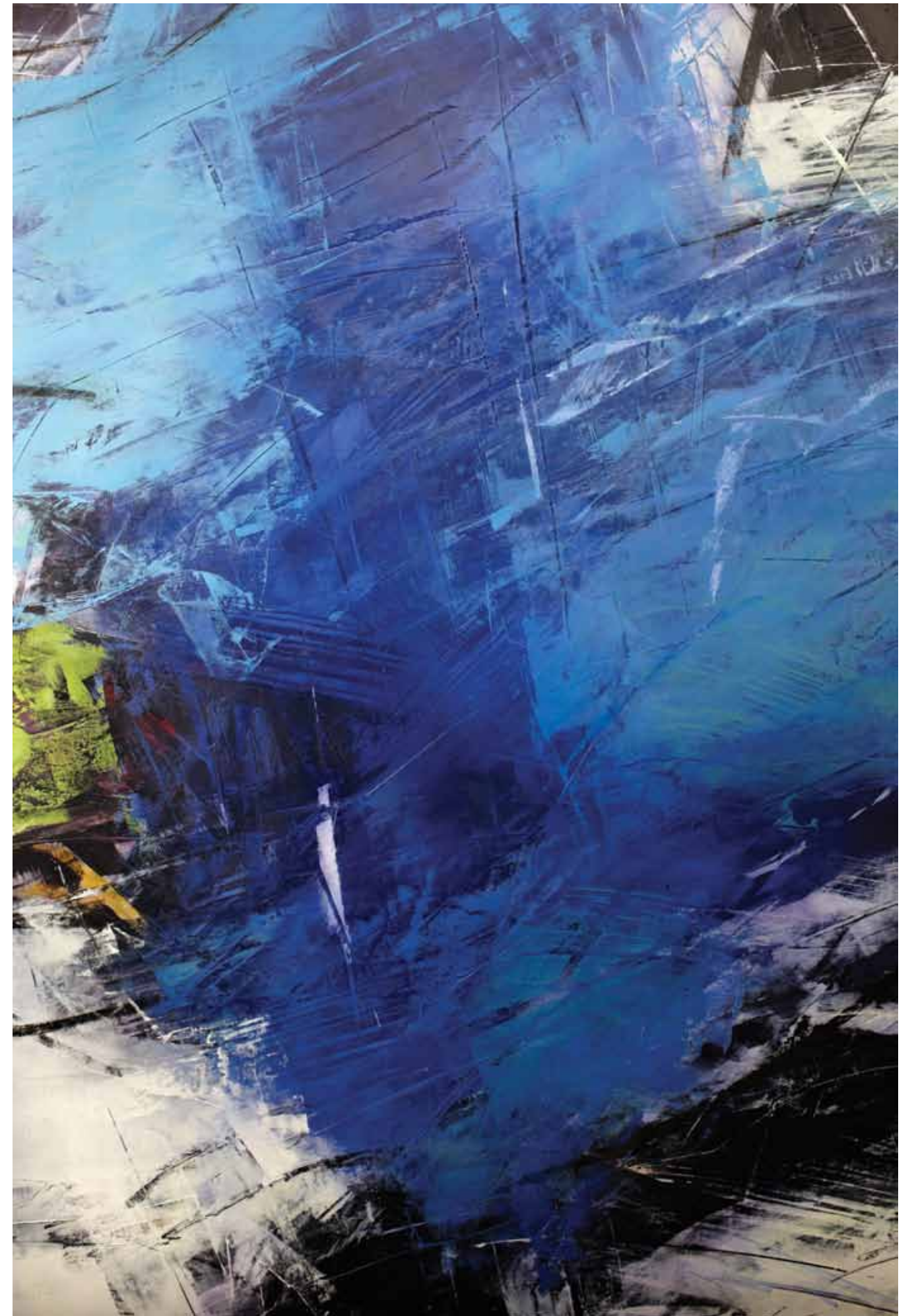
bottom right, Chris Langstroth, *Walk-Talk*, acrylic on canvas, 52" x 48"



Etienne Labbé , *Can we go another tomorrow?*, chromogenic print on dibond, 24" x 60"



Franco DeFrancesca, *Chromeleon Semaphore*, pigment print and resin on board, 30" x 40"



Ivo Stoyanov, *Vivid Blue I*, mixed media on canvas, 60" x 40"



top
Kim Atlin, *Wilderness Camp*,
oil & acrylic on canvas, 30" x 40"

bottom
Kim Atlin, *Square*,
oil & acrylic on canvas, 48" x 68"



top, Oeno Gallery
Sculpture by David James,
Caught by the Moon

bottom, Kim Atlin, *Phantoms*,
oil & acrylic on canvas, 30" x 40"

